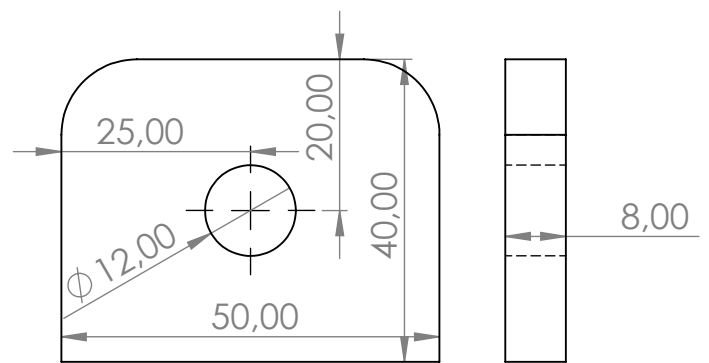
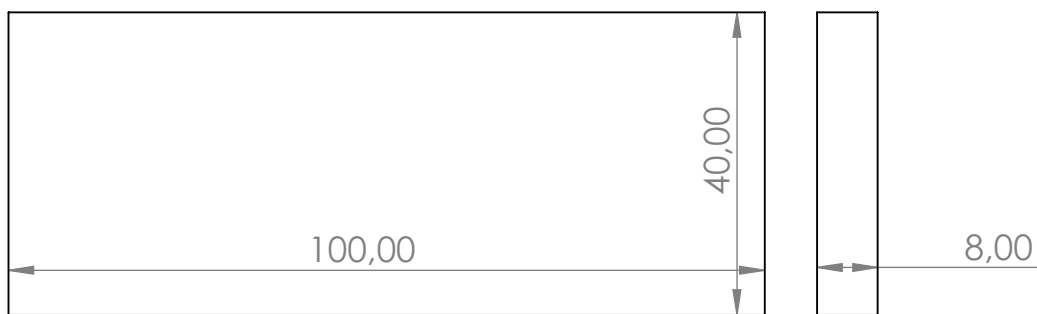


Support Cale pieds Arrière (X2)

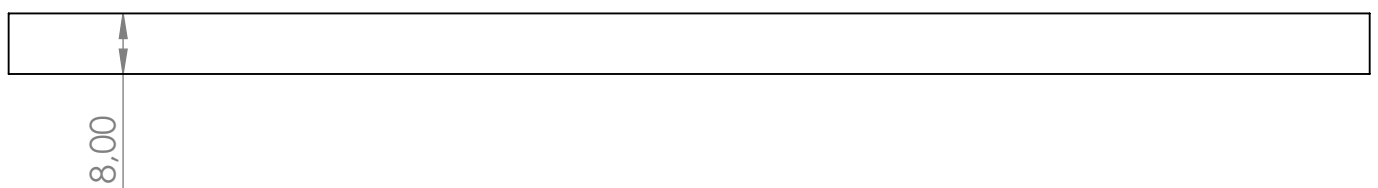
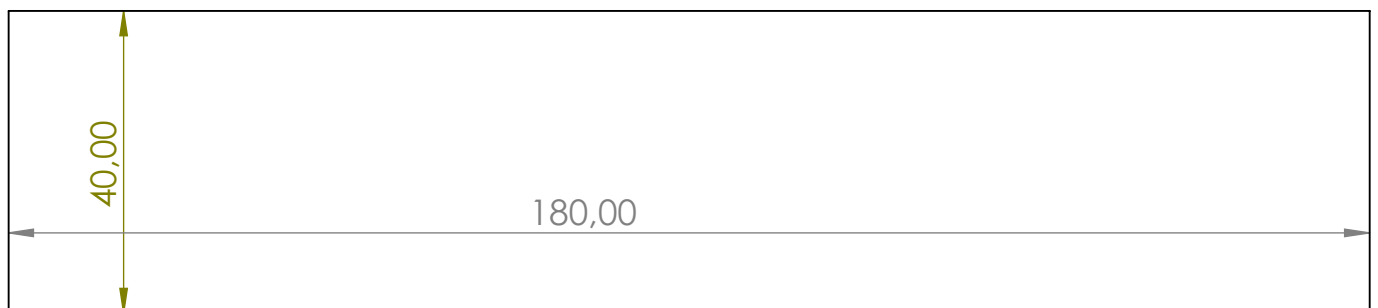


Support Cale pieds Avant (X2)



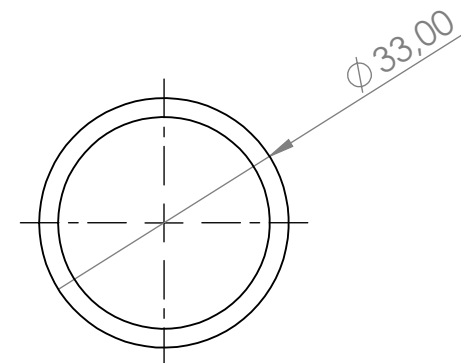
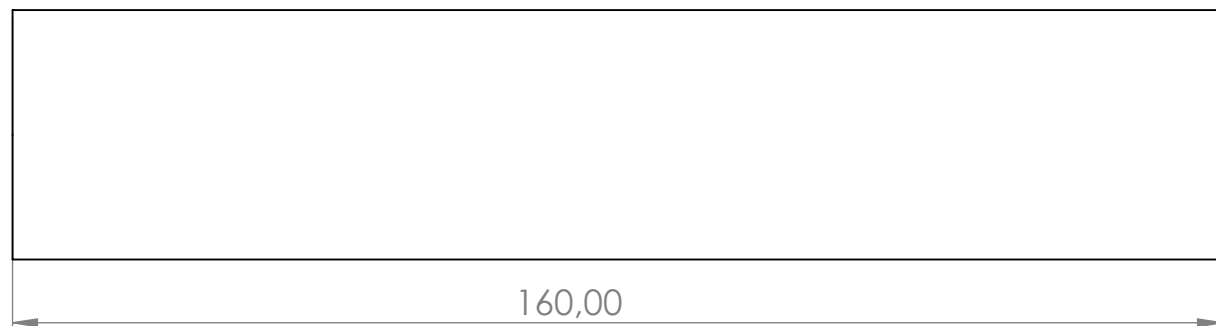
Support Réservoir (A ajuster une fois le cadre soudé)

Support moteur X2

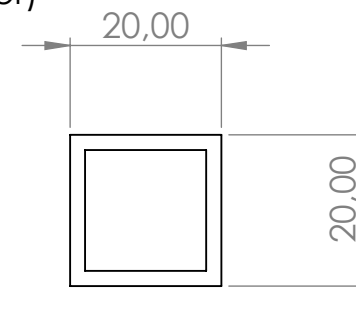
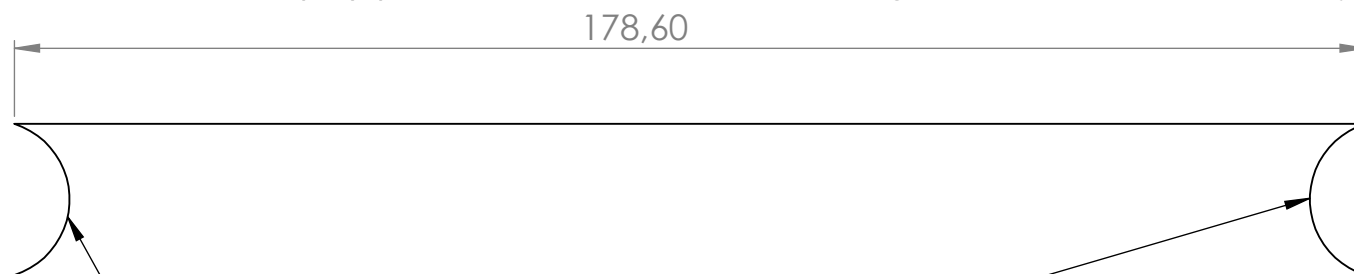


6 5 4 3 2 1

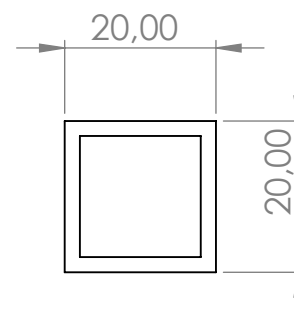
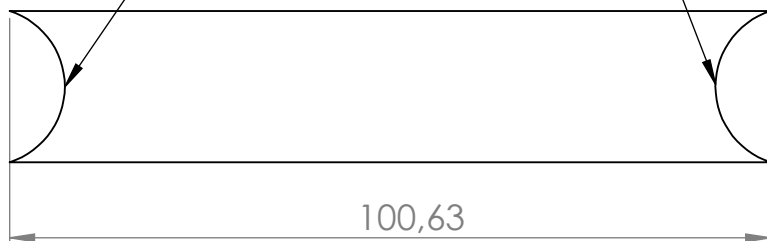
Tube de potence



Transversales basses (X2) (attention une un peu plus longue que l'autre, il faudra ajuster)



Geules de loup Diam 21mm



Transversales Hautes (X2) (attention il faudra ajuster)

pieces cadre

6 5 4 3 2 1